

August 2019

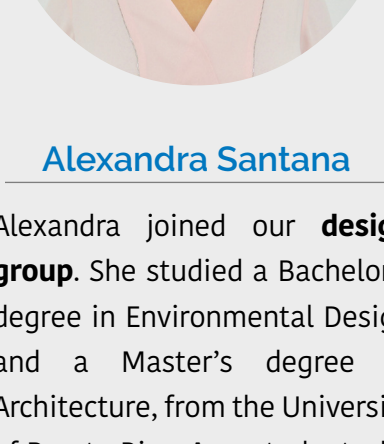
REINFORCING OUR TEAM

PCD is proud to announce the expansion of our team during the month of August.



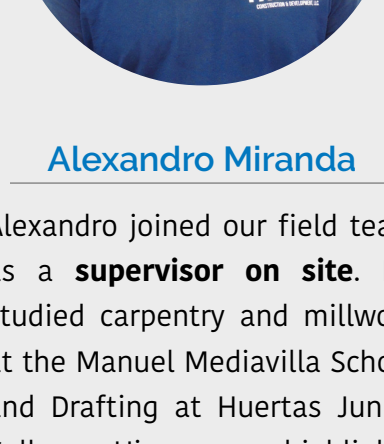
Andrés Sanfelú-Vera

Registered architect with a Bachelor's in Environmental Design and a Master's in Architecture, from the University of Puerto Rico joined our field management team as a **project supervisor**. His experience includes being the General Forman for the Belmont Project, served as Regional Director for OMEP and as a Design Manager for the Municipality of San Juan and has an OSHA Certification on General Industry Safety & Health. Has a special interest in low income housing and has registered various designs.



Alexandra Santana

Alexandra joined our **design group**. She studied a Bachelor's degree in Environmental Design and a Master's degree in Architecture, from the University of Puerto Rico. As a student, she interned with the firm Álvarez-Díaz & Villalón, the Planning Office of University of Puerto Rico, Río Piedras Campus and worked as a student coordinator for the School of Architecture's Material Library.

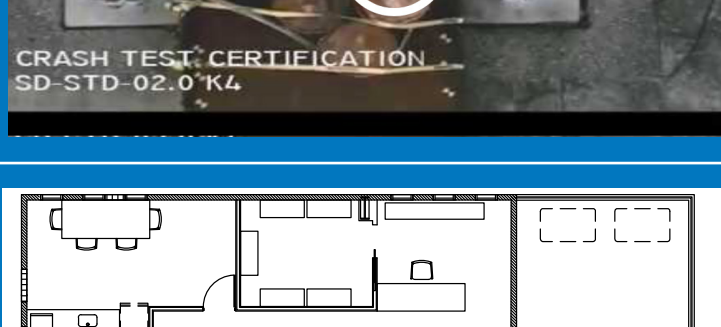


Alexandro Miranda

Alexandro joined our field team as a **supervisor on site**. He studied carpentry and millwork at the Manuel Mediavilla School and Drafting at Huertas Junior College. His career highlights include the construction of the low income housing development Haciendas de Tena in Juncos, PR, and the construction of single-family houses in Las Praderas, Gurabo, PR.

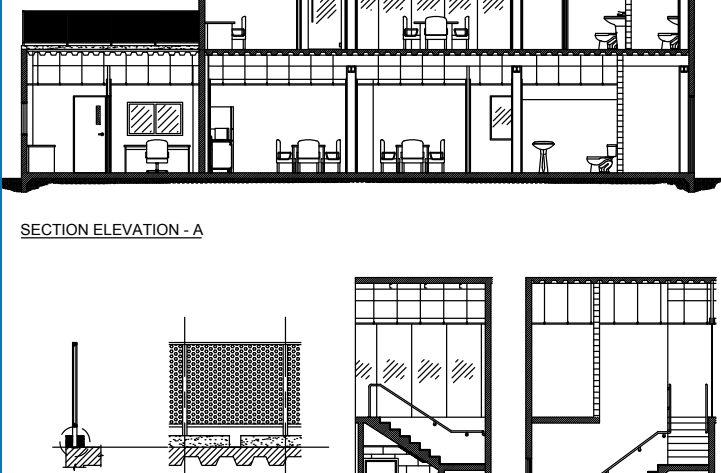
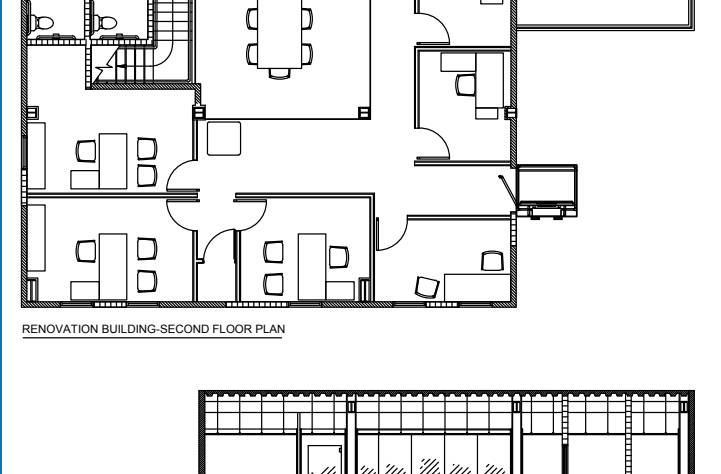
NEW PROJECT AWARDS

This month PCD was awarded three new contracts that include construction or design /construction.



AEROSTAR AIRPORT HOLDINGS, LLC

PCD was awarded a construction contract for the installation of Atlantic Anti-Ram Crash Beams to secure access to the airport airfield and runways and improve security at the Luis Muñoz Marín International Airport in Carolina, PR.



EL COQUÍ LANDFILL

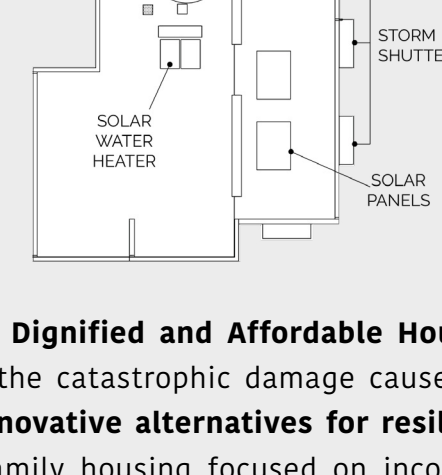
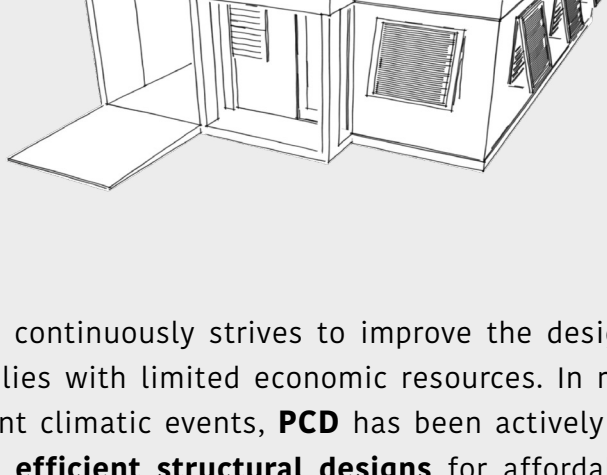
The final design for the **El Coquí Landfill Operations Building** was approved and a contract was executed for both design and construction.



HARBORVIEW APARTMENTS

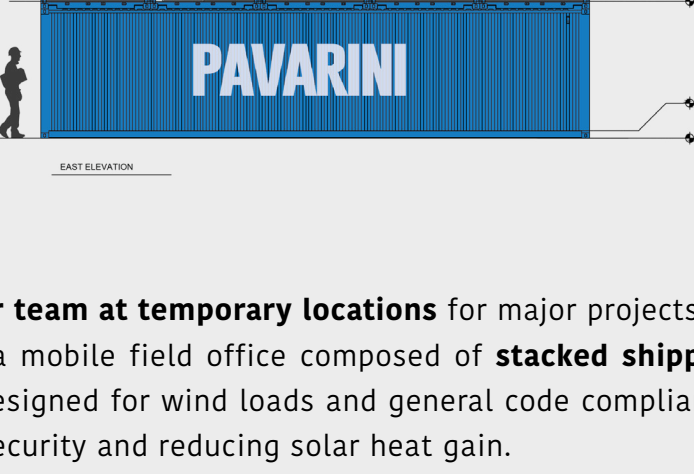
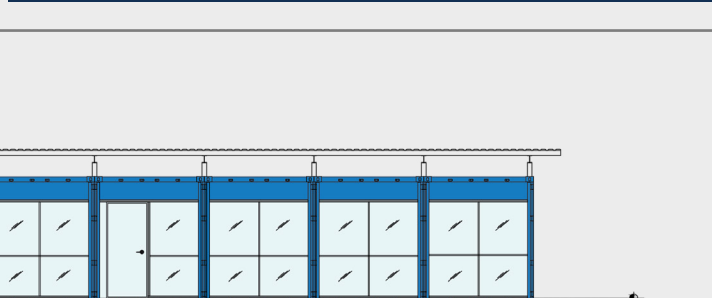
Harborview Apartments is a **public housing development** located in Christiansted, Saint Croix. The project consists of hurricane repair work on 23 apartment buildings. The project is owned and managed by The Michael's Organization, a leading developer of public housing in the United States. PCD was awarded a contract for the Harborview Apartments by Prestige Building Company, LLC, construction affiliate of the Michael's Organization.

NEWS FROM THE DESIGN STUDIO

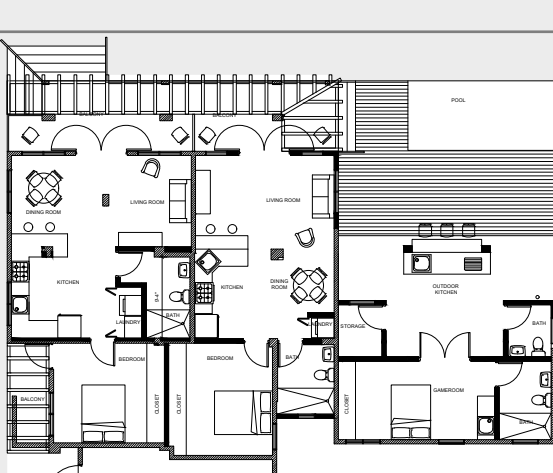


PCD continuously strives to improve the design for **Safe, Dignified and Affordable Housing** for families with limited economic resources. In response to the catastrophic damage caused by the recent climatic events, PCD has been actively studying **innovative alternatives for resilient and cost efficient structural designs** for affordable single-family housing focused on incorporating design features such as: electric power alternatives, potable water storage, and heating sources for cooking and domestic water to improve the survivability for future climatic events. These innovative designs will be incorporated in the next phase of the housing development of the **Vista Verde** project and potential future housing relocation developments.

The construction documents were completed for the **El Coquí Landfill Operations Building**, the renovation of **Shell Castle 40**, and the addition and renovation **Palma Real 13**. Construction permit applications were filed and are pending for all three projects.



In the anticipation of the need to **mobilize our team at temporary locations** for major projects we have been experimenting with the design of a mobile field office composed of **stacked shipping containers**. The modular structure has been designed for wind loads and general code compliance, with additional attention to security and reducing solar heat gain.



PCD has been performing land use studies, schematic design, and structural analysis of an existing building in Dorado, PR for the **Kikita Beach House**. The project program is for the development of an **oceanfront Airbnb**.



FIELD REPORTS

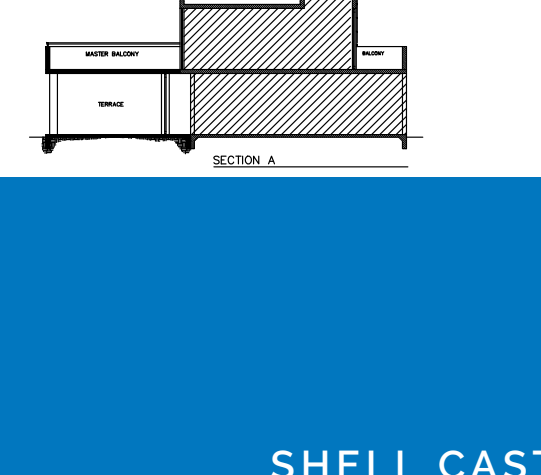
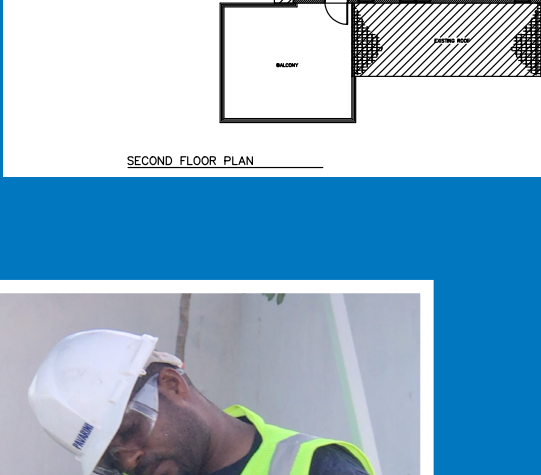
SHELL CASTLE 40

Structural revisions and renovation works have begun. This project includes **design and construction services** of a single-family residence in Palmas del Mar including modifications to the existing structure, replacement of fixtures, door and finishes and the construction of an intermediate floor structure using the **Spanish Colonial methodology**.



PALMA REAL 13

Renovation and additions to the single-family residence located in Palmas Del Mar are under way. The scope of services combine **design and construction** including additions, the removal and replacement of all floors, windows, fixtures and finishes.



SHELL CASTLE 41

We've completed the **repairs** due to damages caused by Hurricane María to the single-family residence located within Palmas Del Mar and owned by Swan Global Investment.

EL COQUÍ LANDFILL SECURITY ENTRANCE

PCD was contracted in July 2019 to **design and build** a new entrance for the El Coquí Landfill owned and operated by the EC Waste Company. The scope of services combined **design and construction** including an architectural wall, heavy security gates and traffic control arms, an entrance driveway designed for highway loads, renovations to the guardhouse, signage and landscaping. The construction work **began and was completed in August 2019**.

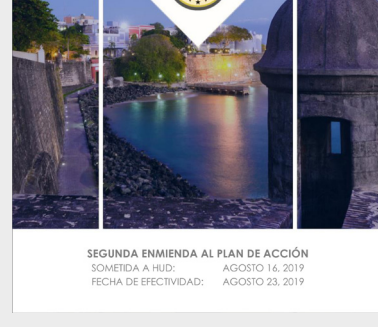


THE PUNCHLIST

Other exciting news of this month included the participation of PCD in design and construction professional communities.



PCD was admitted as a member of the Puerto Rico's **"Asociación de Contratistas Generales de América"** **Capítulo de Puerto Rico**. (AGC: General Contractors Association of America).



PCD, has been actively participating on the committee of the **"Asociación de Constructores de Puerto Rico"** (ACPR: Puerto Rico Builder's Association) to develop recommendations to the PR Housing Authority for guidelines for the **CDBG-DR 2018** program. A draft of the recommended guidelines has been completed and a meeting to present the recommendations to the Puerto Rico Housing Authority is pending.



George Pavarini, PCD President, was admitted as a member of the **American Institute of Architects, Puerto Rico Chapter**.



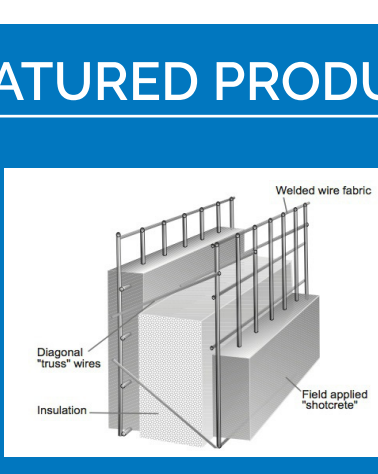
Lorena Gil, PCD Vice-President, joined the **AGC committee of Women in Construction**.



USEFUL LINKS

- [Junta de Planificación](#)
- [Asociación de Contratistas Generales de América](#)
- [AIA Puerto Rico](#)
- [El Nuevo Día - Construcción y Tendencias para el hogar](#)
- [Colegio de Arquitectos y Arquitectos Paisajistas](#)
- [Programa de Subvención en Bloque para el Desarrollo Comunitario para la Recuperación ante Desastres de Puerto Rico \(CDBG-DR\)](#)

FEATURED PRODUCT



STRUCTURAL INSULATED PANELS (SIP)

Structural insulated panels are a sandwiched-structure composite of a foam core covered by different materials such as wood, concrete, metal mesh and others. PCD is studying this material for its application on the **Vista Verde** project.